

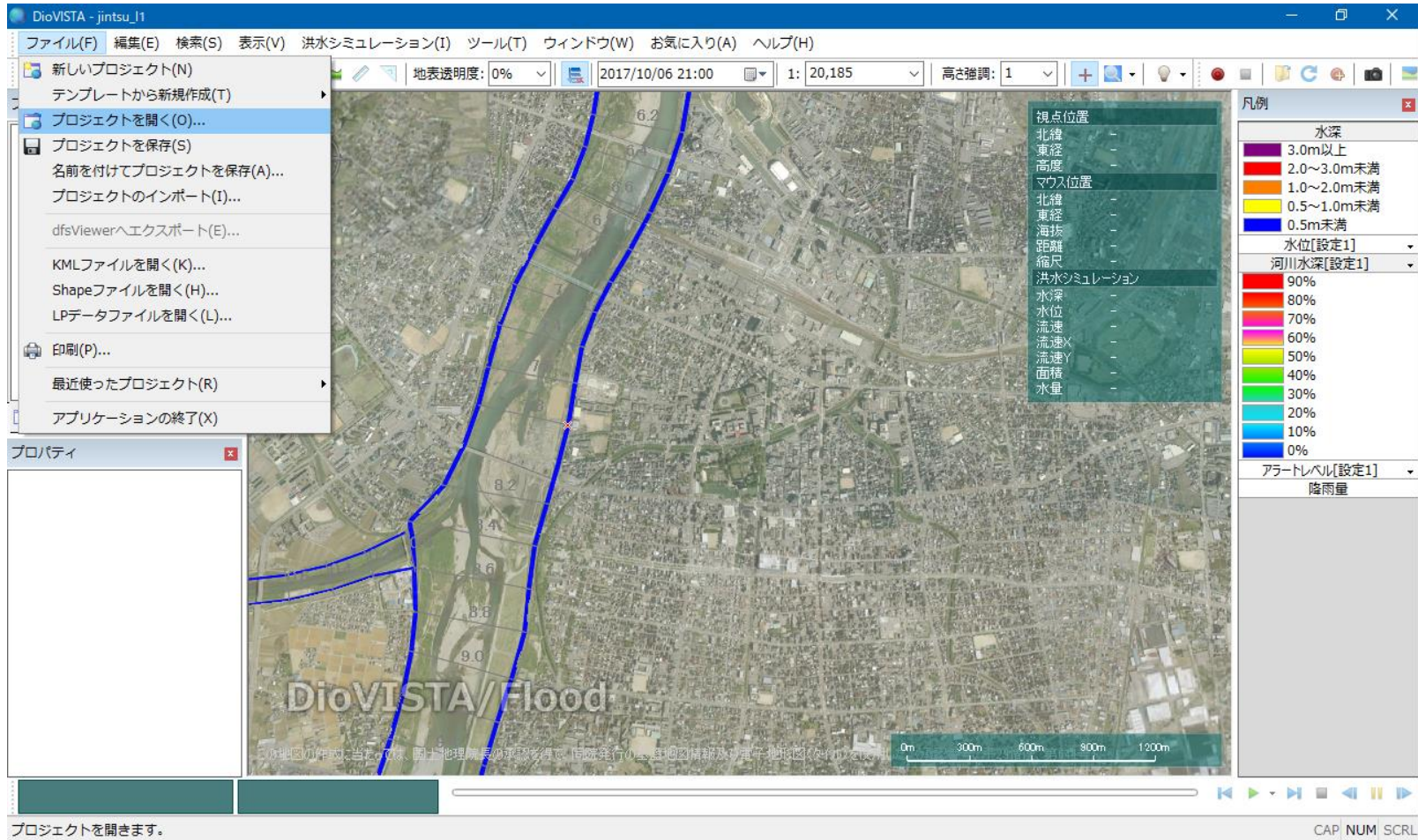
DioVISTA/Flood

Example of flood damage assuming
rainfall on the scale of 1/150 of the
probability of occurrence and levee
failure



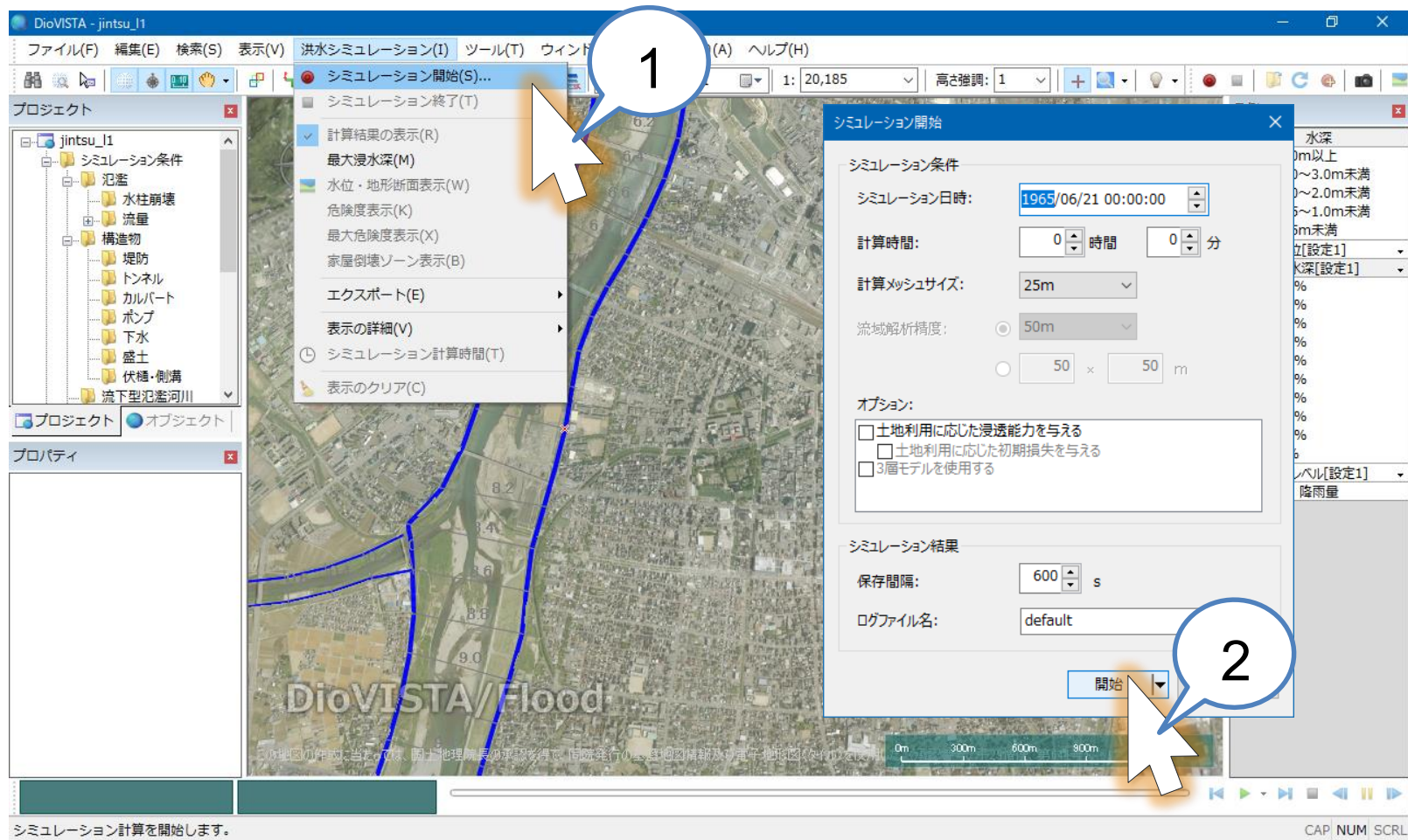
株式会社 日立パワーソリューションズ

Open a project file



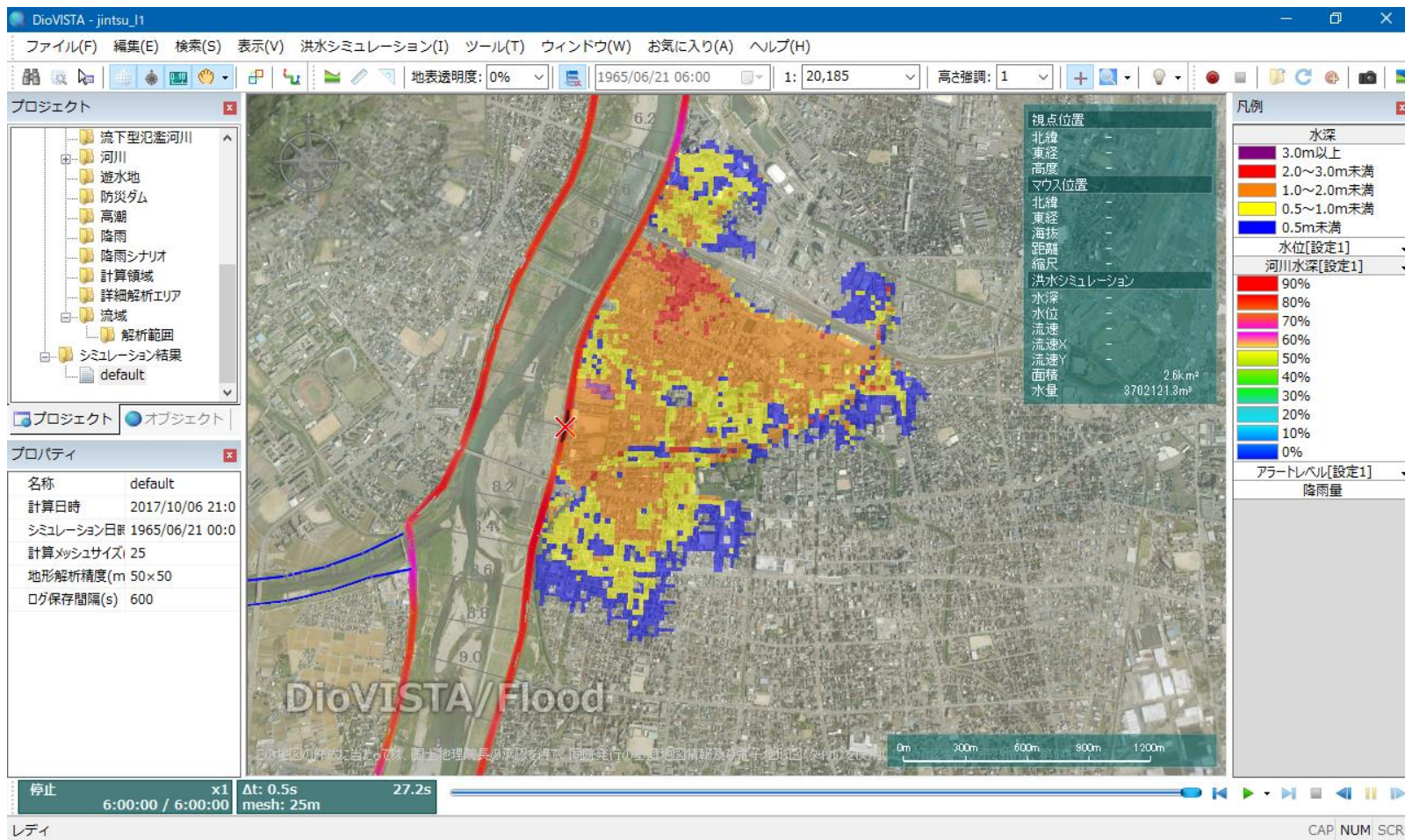
1. Download and extract the [sample project](#)
2. In the menu > File> Open Project Specify the file Jinzu_I1.fszproj for the sample project.

Start Calculation



1. Menu > Flood simulation> Start simulation
2. Click the Start button

Calculation completed

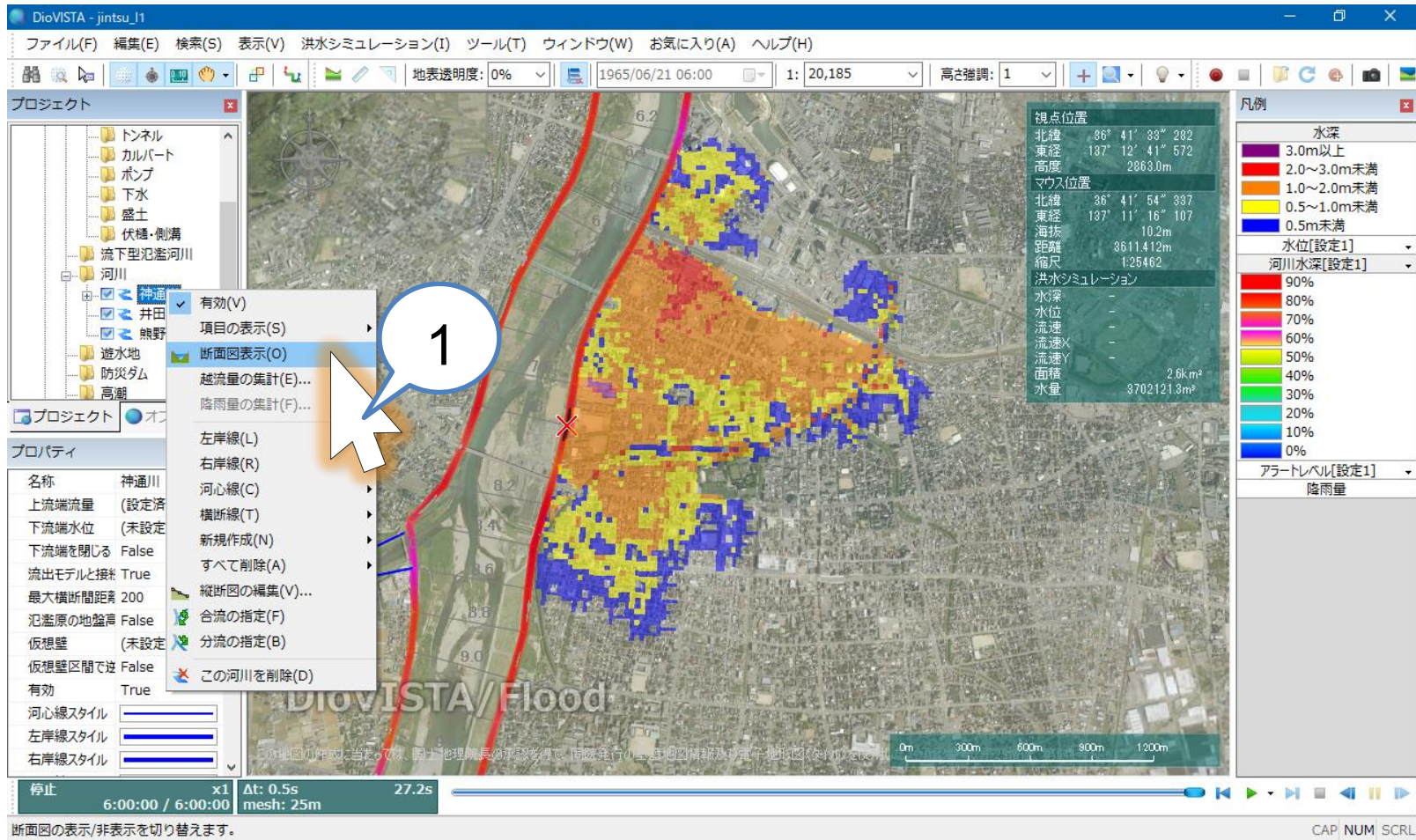


Simulation results were obtained.

View river cross-sectional drawings

Inspire the Next

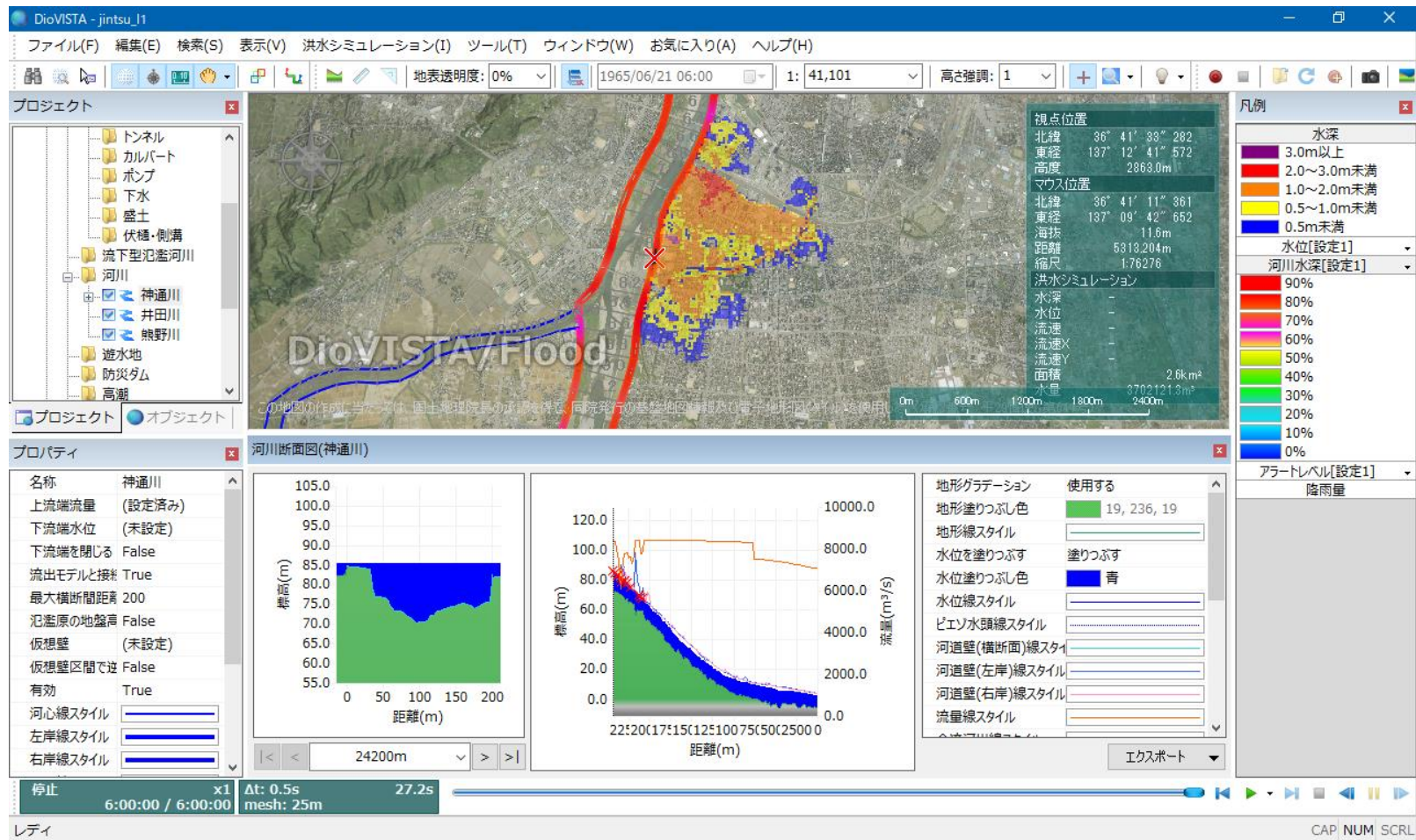
Displays a cross-sectional view of a river



River > Jintsu River > Cross-sectional view display

View river cross-sectional drawings

Inspire the Next



Cross-sectional view of the river was displayed